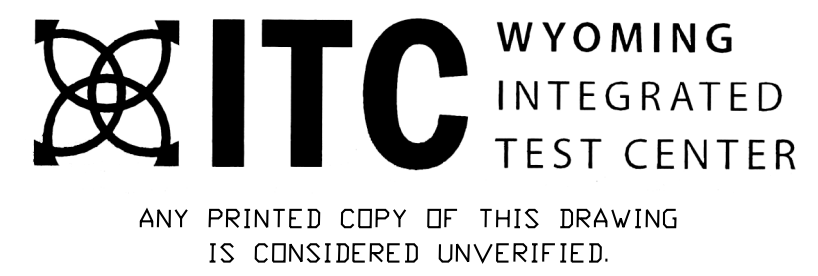


NOTES

1. HEAT TRACING TO EXTEND 66" BELOW GRADE

REFERENCE DRAWINGS

DFS-MF-1DM-0001 WASTE WATER P&ID



ANY MODIFICATION OR ADDITION TO THIS DRAWING BY AN ORGANIZATION OTHER THAN SARGENT & LUNDY, IS NOT THE RESPONSIBILITY OF SARGENT & LUNDY.

| PDC NUMBER | DESIGN PRESSURE (psig) | DESIGN TEMP. (DEG. F) | MAX OPER. PRESSURE (psig) | MAX OPER. TEMP. (DEG. F) | PIPE CLASS | PDT | INSULATION TYPE |
|------------|------------------------|-----------------------|---------------------------|--------------------------|------------|----------|-----------------|
| DM-6 | 80 | 100 | 60 | 100 | D | DFS 0099 | N |
| DM-7 | 80 | 100 | 60 | 100 | D | S&L 0105 | H |

| REV. | DESCRIPTION | PREPARED | REVIEWED | APPROVED | DATE |
|------|---------------------------------------|-----------|-------------|-----------|------------|
| D | ISSUE FOR CONSTRUCTION, SPEC B-512368 | E. OSGOOD | K. LAUZZE | K. LAUZZE | 8/30/2018 |
| C | ISSUE FOR CONSTRUCTION, SPEC B-512368 | E. OSGOOD | K. LAUZZE | K. LAUZZE | 02/13/2017 |
| B | ISSUE FOR BIDS B-512368 | E. OSGOOD | B. GOLDLUST | --- | 06/14/2016 |
| E | FOR RECORD | E. OSGOOD | --- | --- | 01/30/2019 |

Sargent & Lundy LLC

FILE NAME: DFS-MF-1DM-0004.DGN

CONTRACTOR/INSTALLER SHALL TAKE ALL APPROPRIATE PRECAUTIONS TO ENSURE THE SAFETY OF ALL PEOPLE LOCATED ON THE WORK SITE, INCLUDING CONTRACTOR'S/INSTALLER'S PERSONNEL (OR THAT OF ITS SUBCONTRACTOR(S)) PERFORMING THE WORK.

FACILITY: DRY FORK STATION

LOCATION/UNIT: UNIT 1

CONTRACT/DESIGNATION: 13405-002

CARBON CAPTURE TEST CENTER
PIPING AND INSTRUMENTATION DIAGRAM
WASTE WATER

BASIN ELECTRIC POWER COOPERATIVE
Your Touchstone Energy Partner

| | | |
|-------------------------|-----------------|------------------|
| DESIGN BY | ESO | 02/13/17 |
| DRAWN BY | ESD | 02/13/17 |
| CHECKED BY | KCL | 02/13/17 |
| DATE OK | KCL | 02/13/17 |
| APPROVED | KCL | 02/13/17 |
| SCALE: | 12" = 1'-0" | |
| VENDOR/ORIGINATED FROM: | N/A | |
| VENDOR DRAWING NO. | N/A | ORIGINAL REV N/A |
| BASIN DRAWING NO. | DFS-MF-1DM-0004 | REV. NO. E |